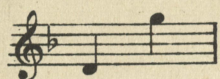


HIGH EDITION



LOW EDITION



THROUGH LOVE TO LIGHT

A SACRED SOLO

BY

E.L. ASHFORD

35 CENTS
NET SELLING PRICE
(R. IN U.S.A.)

70 EAST 45 ST.
NEW YORK.

LORENZ
PUBLISHING CO.
DAYTON, OHIO.
PRINTED IN U.S.A.

218 S. WABASH AVE.
CHICAGO.

To Mr. John B. Dodge.

THROUGH LOVE TO LIGHT.

First stanza by
RICHARD W. GILDER.
Second stanza by
H. von BERGE.

LOW

E. L. ASHFORD.

Andante.

Through love ——— to light! ——— Oh, won - der - ful the

cres.
way ——— That leads from dark - ness to the per - fect

poco agitato e cres.
day! ——— From dark - ness and from sor - row, from

sf sf

con anima.
sor - row of the night ——— To morn - ing that comes

a tempo. *f*

sing-ing, _____ comes sing - ing o'er the sea; _____ Through

This system contains the first two staves of music. The vocal line is on a treble clef staff with a key signature of two sharps (F# and C#). The piano accompaniment is on a grand staff (treble and bass clefs). The tempo is marked 'a tempo.' and the dynamic is 'f'.

love _____ to light! _____ Through light, O God, to

This system contains the second two staves of music. The vocal line continues with the lyrics 'love to light! Through light, O God, to'. The piano accompaniment features a 'ff' dynamic marking.

thee, _____ Who art the Love of love, th'e - ter - nal

This system contains the third two staves of music. The vocal line continues with the lyrics 'thee, Who art the Love of love, th'e - ter - nal'. The piano accompaniment continues with a steady accompaniment.

Light _____ of light!

This system contains the final two staves of music. The vocal line concludes with the lyrics 'Light of light!'. The piano accompaniment features a '7' time signature and a 'cresc.' marking.

Through toil _____ to rest, _____ through strife at last to

cres.
 peace! _____ From ev - 'ry bur - den won - drous sweet re -

poco agitato e cres.
 lease. _____ For ev - 'ry cross that heav - y on

con anima.
 droop - ing shoul - der lay _____ The crown of glo - ry

a tempo. *f*

waiting, the crown of vic - to - ry! Through

toil to rest, to rest, O God, in

ff

mp *cres.*

thee, And through earth's wea - ry night to heav'n's e -

cres.

ff

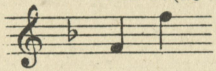
ter - - - - - nal day!

f *ff Grandioso.* *sva.*

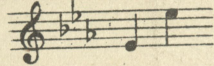
A Successful Sacred Song.

Used by Eminent Singers in Church and Concert Programs.

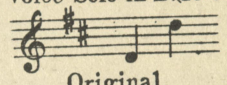
High Voice Solo in F. (40 cents.) net



Medium Voice Solo in Eb. (40 cents, net)



Low Voice Solo in D. (40 cents.) net



Original.

First and Second Stanzas by
MAUDE LOUISE RAY.

MY TASK.

Third Stanza by
Rev. S. H. PICKUP.

All prices quoted are Net Selling Prices in U. S. A.

E. L. ASHFORD.

- | | |
|---------------------------------------|---------------------------------------|
| Soprano and Contralto Duet. 40 cents. | Quartet for Mixed Voices. 12 cents. |
| Soprano and Tenor Duet. 40 cents. | Quartet for Men's Voices. 12 cents. |
| Tenor and Contralto Duet. 40 cents. | Quartet for Women's Voices. 12 cents. |
| Organ Solo. 40 cents. | Chorus for S. A. B. 12 cents. |

love some one more dear - ly ev - 'ry day, To help a wand'-ring child to find his

way, To pon - der o'er a no - ble thought, and pray, And smile when

eve - ning falls, And smile when eve - ning falls, This is my task.

Copyright, 1903, by Lorenz Publishing Co.

Third Stanza Copyright, 1913, by Lorenz Publishing Co. International Copyright Secured.

Order direct of the Publisher if your local dealer cannot supply you.